



Henry Darlot Drive, Mill Hill, NW7 1RF

Guide Price £575,000 Leasehold

Council Tax Band E

REAL ESTATES
Est. 1981

Estate Agents · Residential Sales · Investments · Lettings

Real Estates are delighted to present this modern 2 BEDROOM, 2 BATHROOM apartment set in a highly sought-after building within the popular Millbrook Park development in Mill Hill East.

This large 2nd floor flat boasts a stylish open plan kitchen and living space, with double doors providing access onto a PRIVATE BALCONY offering far-reaching views of London. The property also features 2 double bedrooms, both with fitted wardrobes and 1 en-suite, plus a separate family bathroom and storage cupboard off the main hallway. Each room also has floor to ceiling south-facing windows, flooding the property with natural light.

Garrison Heights is ideally located for Mill Hill East Underground Station on the Northern Line, as well as Panoramic Park directly opposite and a plethora of shops and cafes at the nearby Sussex Ring, Woodside Park and Holders Hill Circus.

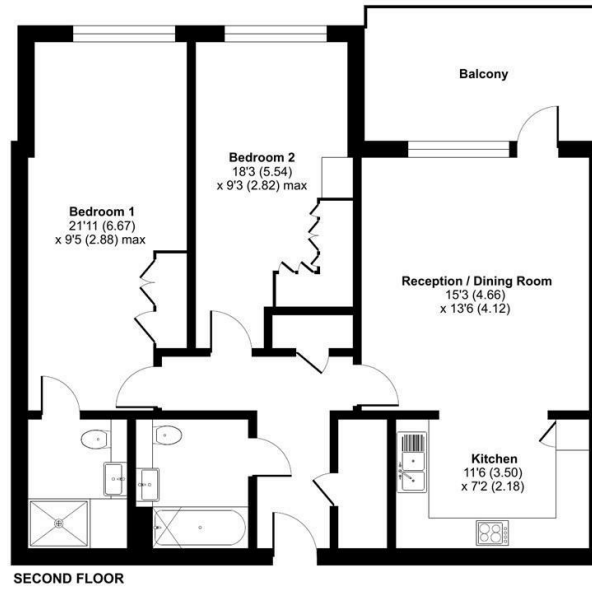
ALLOCATED UNDERGROUND PARKING SPACE. LEASE REMAINING: 991 YEARS. SERVICE CHARGE: £1851.84 GROUND RENT: £350 PA





Henry Darlot Drive, London, NW7

Approximate Area = 910 sq ft / 84.5 sq m
For identification only - Not to scale



Floor plan produced in accordance with RICS Property Measurement 2nd Edition, incorporating International Property Measurement Standards (IPMS2 Residential). © richcom 2026. Produced for Real Estates. REF: 1307752

Energy Efficiency Rating		
Very energy efficient - lower running costs	Current	Potential
A (92-100)	87	87
B (81-91)		
C (69-80)		
D (55-68)		
E (39-54)		
F (21-38)		
G (1-20)		
Not energy efficient - higher running costs		
EU Directive		



Real Estates Woodside Park Office:
14/14a Sussex Ring
Woodside Park N12 7HX

ll : 020 8445 6387
e : info@realestates-wsp.co.uk
w : www.realestates-wsp.co.uk